

Junaidi

by Junaidi Junaidi

Submission date: 27-Sep-2022 03:42PM (UTC+0700)

Submission ID: 1910263890

File name: Alkindi_Junaidi.docx (132.6K)

Word count: 1881

Character count: 9613

Analysis of Chicken Temperature Control Using a Control System

Junaidi¹, Tony Siagian², Din Aswan Amran Ritonga³, Irpansyah Siregar⁴, Rahmadsyah⁵

^{1,3} Department Mechanical Engineering Fakultas Teknik Universitas Harapan Medan

² Department Mechanical Engineering Fakultas Teknik Universitas Pembinaan Masyarakat Indonesia

⁴ Department Mechanical Engineering Fakultas Teknik Universitas Amir Hamzah Medan

⁵ Department Mechanical Engineering Fakultas Teknik Universitas Asahan

Email : junaidi413@yahoo.com

Abstract

Chicken is one of the side dishes favored by many people in the world. Therefore, many entrepreneurs do business with chicken.

This research is the result of a survey of several technical journals about the temperature of the chicken coop taken from observations and tests carried out in the field carefully this research was carried out to analyze the temperature. The chicken coop regulation system is carried out with the aim of preventing livestock from dying due to the surrounding temperature not appropriate for his age. This study uses the Atmega 8535 microcontroller as the main controller, LM35 as the main controller, temperature sensor in the enclosure and IC L293D as a DC motor driver. The microcontroller will instruct DC motor to work, if the measured temperature is above the specified temperature limit and will instruct the relay to turn on or turn off the incandescent light if the measured temperature is below the specified temperature limit.

By using this relay, the temperature of the chicken coop will be appropriate for anticipating disease outbreaks from the chickens.

Keywords: Temperature regulation, microcontroller, DC motor, temperature sensor

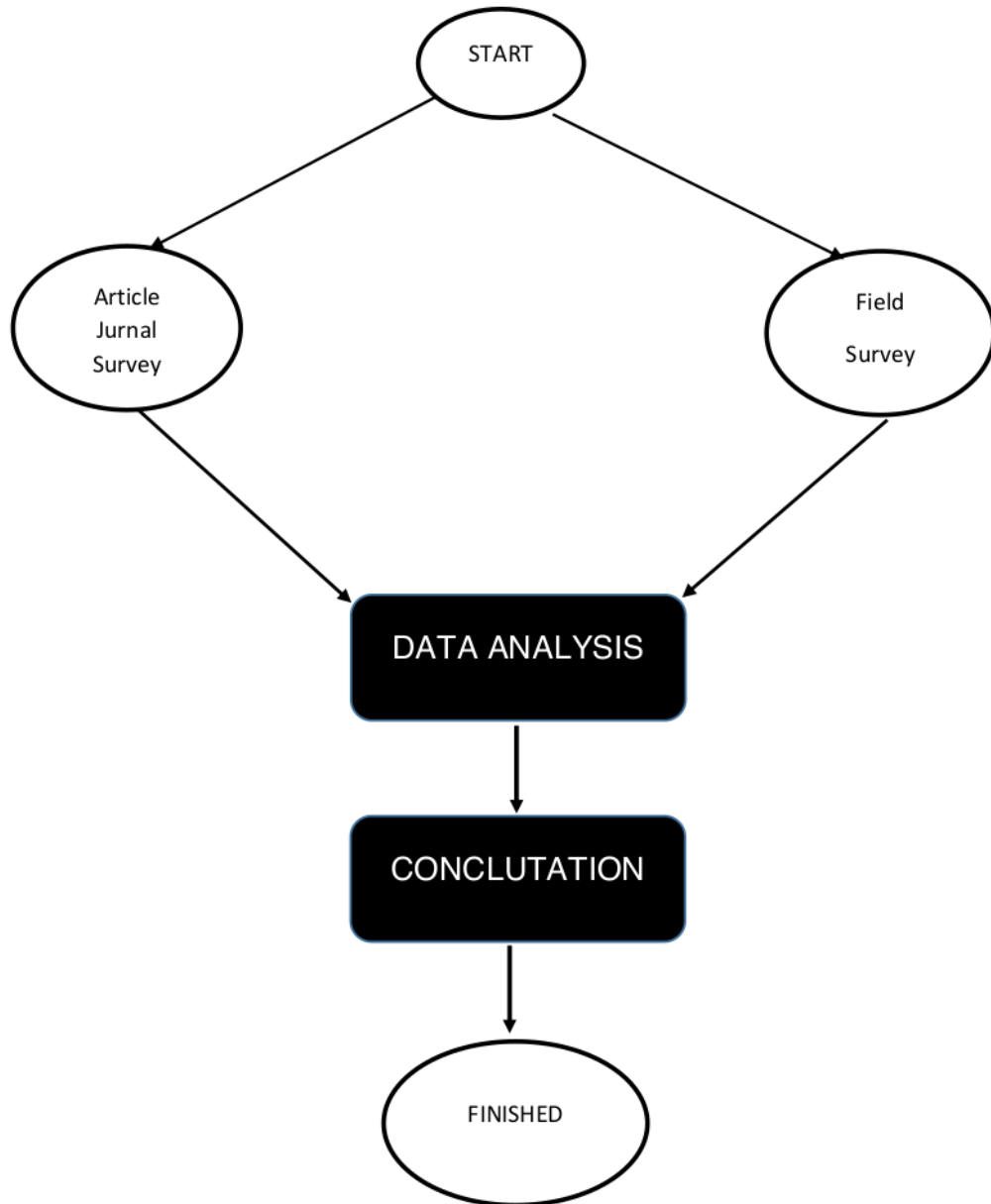
1. INTRODUCTION

Livestock such as broiler chickens are a type of chicken produced from farming technology that has the characteristics of fast growth, as a producer of meat with low feed conversion and ready to be slaughtered at the age of 28-45 days [1,6]. In raising chickens that need to be considered include the provision of balanced chicken feed and the appropriate temperature of the chicken coop. Chicken is a warm-blooded (endothermic) animal whose body temperature is regulated accordingly. Chickens can reproduce optimally when internal and external factors are within normal limits [2,7] according to their needs. Environmental temperature is one of the external factors that can affect chicken productivity. The hot temperature in a chicken raising environment has become one of the main concerns because it can cause economic losses due to increased mortality and decreased productivity. The relatively high temperature in a maintenance environment causes heat stress. Heat stress causes disruption to the growth of broiler chickens [3,8]. This growth disturbance is related to a decrease in feed consumption and an increase in drinking water consumption as long as chickens experience heat stress [4,9]. In order to answer these challenges, chicken farmers are required to choose appropriate methods for raising chickens. These methods include land selection methods, cage making methods, feeding methods, cage cleaning methods. One solution to overcome these problems is the use of technology. Therefore, the author tries to design a chicken coop with an automation system to help and support farmers in the field of maintenance, especially in regulating the temperature of chicken coops. This tool is expected to help farmers in reducing mortality or decreasing productivity of poultry due to an increase in ambient temperature. The main reference used is the use of the Atmega8535 AVR series microcontroller as the main controller of the system [5,10].

2.RESEARCH METHODS.

Flow Chart.

Fig 1. Research Flow Chart



2. RESULTS AND DISCUSSION

Table 1. Temperature Measurement Results with Temperature Limits 24 - 26 ° C.

TIME(WIB)	Ambient temperature (°C)	Enclosure Temperature (°C)	Information
00.00	26	25.5	-
03.00	24.5	25	-
06.00	26.5	25.5	Fan Live
09.00	28	26	Fan Live
12.00	31.2	28.4	Fan Live
15.00	29.4	28	Fan Live
18.00	28.4	26.9	Fan Live
21.00	27	25	Fan Live

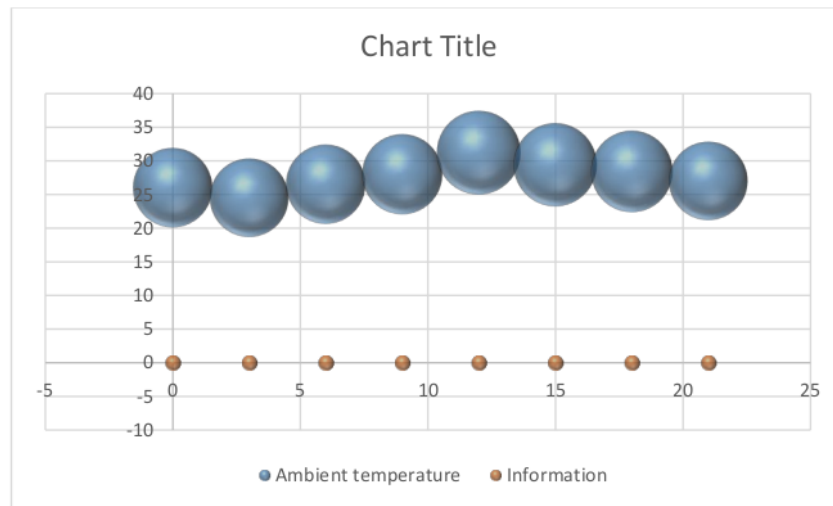


Figure 1.1 Graph of Temperature Measurement Results with Temperature Limits 24-26 ° C

Table 2. Temperature Measurement Results with Temperature Limits 25 - 28 ° C

TIME(WIB)	Ambient temperature (°C)	Enclosure Temperature (°C)	Information
00.00	26	26.4	-
03.00	24.5	25.9	-
06.00	26.5	25.9	Life lights
09.00	28	26	Fan Live
12.00	31.2	28.4	Fan Live
15.00	29.4	27.9	Fan Live
18.00	28.4	26.4	Fan Live
21.00	27	25.9	-

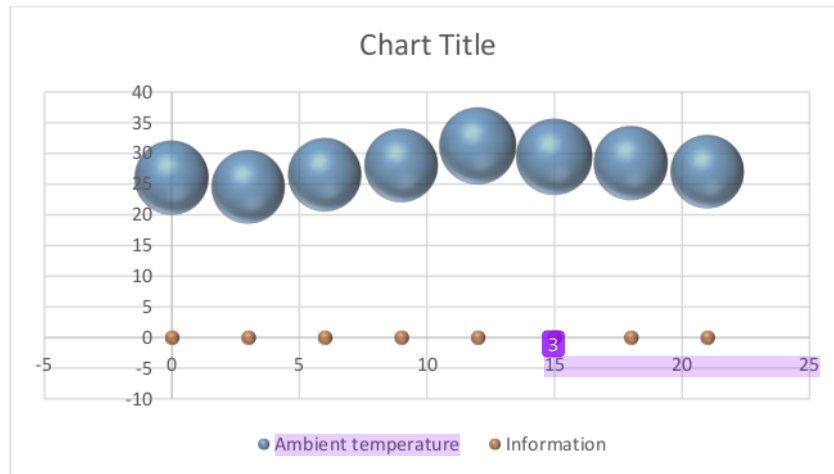


Figure 2.1 Graphic Results of Temperature Measurement With Temperature Limitation 25-28 ° C

Table 3. Temperature Measurement Results With Temperature Limits 28 - 25 ° C

TIME(WIB)	Ambient temperature (°C)	Enclosure Temperature (°C)	Information
00.00	26	26.4	-
03.00	24.5	26.4	-
06.00	26.5	25.9	Life lights
09.00	28	26.9	-
12.00	31.2	28.4	Fan Live
15.00	29.4	27.9	Fan Live
18.00	28.4	26.4	Fan Live
21.00	27	25.9	-

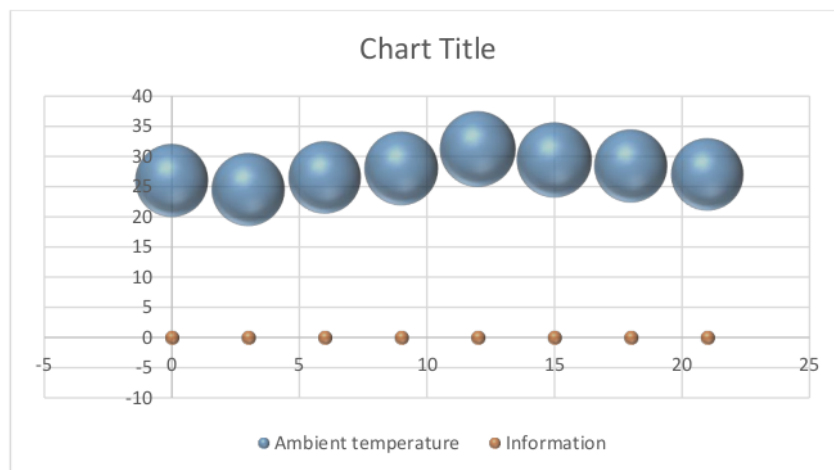


Figure 3.1 Graphic Results of Temperature Measurement With Temperature Limitation 28-25 ° C.

Table 4. Temperature Measurement Results with Temperature Limits 30 - 27 ° C

TIME(WIB)	Ambient temperature (°C)	Enclosure Temperature (°C)	Information
00.00	26	29.4	Life lights
03.00	24.5	29.4	Life lights
06.00	26.5	29.4	Life lights
09.00	28	27.9	-
12.00	31.2	28.4	Vane Light
15.00	29.4	29.4	-
18.00	28.4	27.9	Vane lights
21.00	27	29.4	Life lights

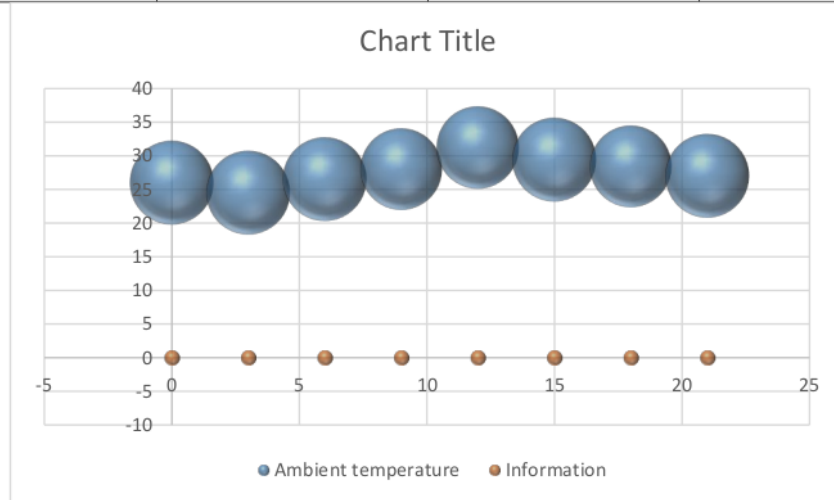


Fig. 4.1 Graphic Results of Temperature Measurement With Temperature Limits of 30-27 ° C.

Table 5. Temperature Measurement Results with Temperature Limits 32- 29 ° C.

TIME(WIB)	Ambient temperature (°C)	Enclosure Temperature (°C)	Information
00.00	26	29.4	Life lights
03.00	24.5	29.4	Life lights
06.00	26.5	29.4	Life lights
09.00	28	27.9	-
12.00	31.2	28.4	Vane Light
15.00	29.4	29.4	-
18.00	28.4	27.9	Vane lights
21.00	27	29.4	Life lights

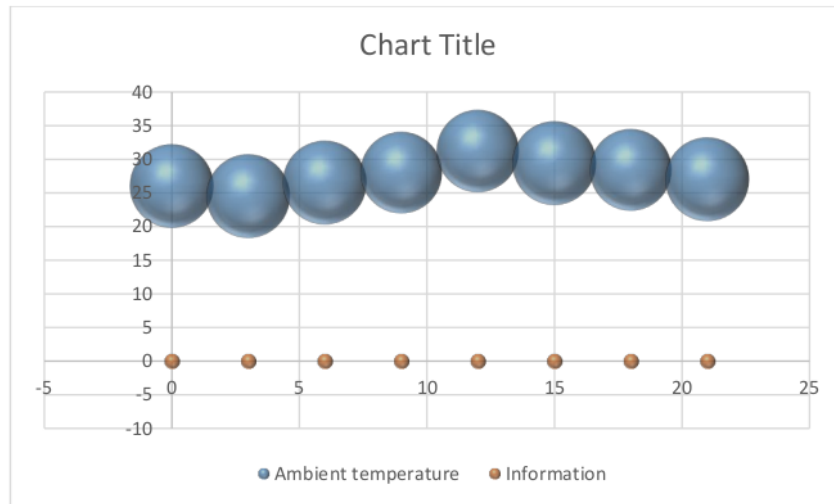


Figure 5.1 Graphs of Temperature Measurement Results with Temperature Limits 32-29 ° C.

4.CONCLUSION

Table 1. Chicken Age Test Results Over 12 days Temperature Limit 24 - 26 ° C.

From table 1 and figure 1.1 we can see the temperature of the cage can be maintained between the temperature range of 26 oC to 25 oC. Only in the range of 12.00 WIB noon to 15.00 WIB the temperature of the cage reaches a temperature of 28.4 oC and 26.9 oC. This is due to the large value of the ambient temperature greatly affecting the temperature of the cage so that the fan cannot maintain the temperature of the cage at the specified temperature value. The light will automatically turn on at temperature the cage is under 24 oC and the lamp will automatically turn off when the temperature reaches a temperature above 25 oC. While the fan will automatically turn on when the temperature of the cage is above 26 ° C and will turn off automatically when the temperature reaches a temperature of 25 ° C.

Table 2. Results of Chicken Age Testing 9 days Temperature Limit 25 - 28 ° C.

From table 2 and figure 2.1 we can see the temperature of the cage can be maintained between the temperature range of 27 oC to 25 oC. Only in the range of 12.00 WIB noon to 15.00 WIB the temperature of the cage reaches a temperature of 28.4 oC and 26.9 oC. This is due to the large value of the ambient temperature greatly affecting the temperature of the cage so that the fan cannot maintain the temperature of the cage at the specified temperature value. The light will automatically turn on at temperature the cage is under 25 oC and the lamp will turn off automatically when the temperature reaches a temperature above 26 oC. While the fan will automatically turn on when the temperature of the cage is above 27 ° C and will turn off automatically when the temperature reaches a temperature of 25 ° C

Table 3. Test Results for Chicken Age 6 days Temperature Limit 28 - 25 ° C.

From table 3 and figure 3.1 we can see the temperature of the cage can be maintained between the temperature range of 28 oC to 25 oC. Only in the range of 12.00 WIB the noon temperature reaches 28.4 oC This is due to the largevalue of the ambient temperature greatly affecting the temperature of the cage so that the fan cannot maintain thetemperature of the cage at the specified temperature value. The lamp will automatically turn on when the temperature of the cage is below 25 oC and the lamp will turns off automatically when the temperature reaches a temperature value above 27 oC. While the fan will automatically turn on when the temperature of the cage is above 28 ° C and will turn off automatically when the temperature reaches a temperature of 27 ° C.

Table 4. Results of Chicken Age Testing for 3 days Temperature Limit 30 - 27 ° C.

From table 4 and figure 4.1, it can be seen that the temperature of the cage can be maintained between the temperature range of 30 oC. up to 27 oC. The temperature of the cage can be maintained properly in accordance with predetermined temperature limits. The lamp will automatically turn on when the temperature of the cage is below 27 oC and the lamp will turn off automatically when the temperature reaches a temperature value above 29 oC. While the fan will automatically turn on when the temperature of the cage is above 30 ° C and will turn off automatically when the temperature reaches a temperature of 29 ° C.

Table 5. Results of Chicken Age Test for 1 day Temperature Limit 32- 29 ° C.

From table 5 and figure 5.1 it can be seen that the temperature of the cage can be maintained between a temperature range of 32 oC to 29 oC. The temperature of the cage can be maintained properly in accordance with predetermined temperature limits. The lamp will automatically turn on when the temperature of the cage is below 29 oC and the lamp will turn off automatically when the temperature reaches a temperature value above 31 oC. While the fan will automatically turn on when the temperature of the cage is above 32oC and will turn off automatically when the temperature reaches a temperature of 31Oc

5.REFERENCES

1. Delima, Mira., Sugito 2009. Dampak Cekaman Panas Terhadap Pertambahan Bobot Badan Rasio Heterofil- . Limfosit dan Suhu Tumbuh Ayam Broiler, Universitas Syiah Kuala Aceh.
2. Soebhakti, Hendrawan, 2007. Basic AVR Mikrokontroler Tutorial. Politeknik Batam, Batam.
3. Bayu, H.S. 2012. Pemrograman Mikrokontoler dengan Bahasa C. Penerbit Andi. Yogyakarta.
4. Rangkuti, S. 2011. Mikrokontroller ATMEL AVR Penerbit Informatika. Bandung.
5. Riza, Faishol. 2001. Perancangan Sistem Pengandali Suhu dan Memonitoring Kelembaban Berbasis Atmega8355 pada Plant Inkubator, Universitas Diponegoro Semarang.
6. J. Junaidi, S. Hestukoro, A. Yanie, I. Siregar, dan E. Eddy, "Analysis Effects of Exposuretime on Long Steel Stainless Steel Material Proper which Experience Stress Corrosion Cracking," in Proceedings of the Proceedings of The 5th Annual International Seminar on Trends in Science and Science Education, AISTSSE 2018,18-19 October 2018, Medan, Indonesia, 2019
7. Junaidi, S. hestukoro, A. yanie, Jumadi, dan Eddy, "IMPLEMENTATION ANALYSIS OF CUTTING TOOL CARBIDE WITH CAST IRON MATERIAL S45 C ON UNIVERSAL LATHE," J. Phys. Conf. Ser., vol. 930, hal. 012044, Des 2017.
8. A. Yani, Junaidi, M. Irwanto, dan A. H. Haziah, "Optimum reactive power to improve power factor in industry using genetic algortihm," Indones. J. Electr. Eng. Comput. Sci., vol. 14, no. 2, hal. 751–757, Mei 2019.
9. JUNAIDI, METROLOGI DAN PENGUKURAN UNHAR, 1 ed. MEDAN, 2019.
10. JUNAIDI, "Karakteristik Material Baja St.37 dengan Temperatur dan Waktu Pada Uji Heat Treatment Menggunakan Furnace," J. UHAMZAH-ISSN NO.2088-7299, vol. 08, no. 15, hal. 43 s/d 49, 2018

Junaidi

ORIGINALITY REPORT

5%

SIMILARITY INDEX

3%

INTERNET SOURCES

5%

PUBLICATIONS

0%

STUDENT PAPERS

PRIMARY SOURCES

1

journal.eng.unila.ac.id

Internet Source

3%

2

Saiful Hadi, Bambang Waluyo Hadi Eko Prasetyo. "Analysis of Effect of Vegetation Change on Surface Temperature in Umbulharjo Village Area, Sleman Regency Using Geographic Information System", E3S Web of Conferences, 2018

Publication

2%

3

docs.lib.purdue.edu

Internet Source

<1%

Exclude quotes On

Exclude matches Off

Exclude bibliography On